

VALSE POUR JEAN

FRANCK WOLF

♩ = 160

F-1/B \flat

G-1/B \flat

A \flat /B \flat

B \flat +7 B \flat 13

UT



[A]

E \flat Δ 7 D ϕ 7 D \flat 7 C-7 C-7/B \flat A ϕ 7 D7



G-7 G-7/F E ϕ 7 1. A7 A \flat Δ 7 A \flat -7 D ϕ 7



2. A7 D-7 D-7/C B ϕ 7 E7



[B]

F Δ 7 A ϕ 7 A \flat 7 G Δ 7 G-7 G \flat 7



B Δ 7 D ϕ 7 G7 C-7 F7 F-7 B ϕ 7



E \flat Δ 7 D ϕ 7 D \flat 7 C-7 C-7/B \flat A ϕ 7 D7



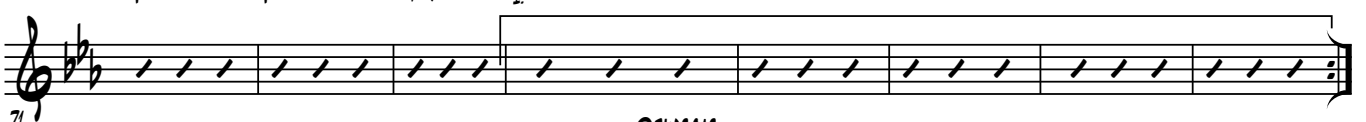
G-7 G-7/F E ϕ 7 A7 A \flat Δ 7 A \flat -7 D ϕ 7



E \flat Δ 7 D ϕ 7 D \flat 7 C-7 C-7/B \flat A ϕ 7 D7



G-7 G-7/F E ϕ 7 1. A7 A \flat Δ 7 A \flat -7 D ϕ 7



79 ^{2.} A7 D-7 D-7/C B ϕ 7 E7

84 F Δ 7 A ϕ 7 A \flat 7 G Δ 7 G-7 G \flat 7

92 B Δ 7 D ϕ 7 G7 C-7 F7 F-7 B \flat 7

100 E \flat Δ 7 D ϕ 7 D \flat 7 C-7 C-7/B \flat A ϕ 7 D7

108 G-7 G-7/F E ϕ 7 A7 A \flat Δ 7 A \flat -7 D \flat 7